

Flower Cardigan



This easy-fitting cardigan has dropped shoulders and buttons to a round neck, finished with a turn-back collar. It's knitted in stocking stitch with ribbed borders. The scattered flower motifs are worked using small lengths of contrast colour, to avoid stranding across the back.

MEASUREMENTS

To fit

4-5 (6-7) yrs

Actual measurements

88.5 (94.5) cm

35 (37¹/₄) in.

Side seam

25.5 (26) cm

10 (10¹/₄) in.

Length

46 (48) cm

18 (19) in.

Sleeve seam

31 (35) cm

12¹/₄ (13³/₄) in.

MATERIALS

10 x 50 g balls of Rowan Handknit DK Cotton in Light Green (309) and 1 ball in each of Green (301), Pale Pink (312), Pink (203), Blue (239) and Yellow (300).

Pair no. 8 (4 mm) and No. 10 (3¹/₄ mm) knitting needles
7 buttons

TENSION

20 stitches and 28 rows to 10 x 10 cm over stocking stitch, using No. 8 (4mm) knitting needles.

ABBREVIATIONS

K, knit; p, purl; st, stitch; tog, together; inc, increase (by working twice in same st) dec, decrease (by taking 2 sts tog); ss, stocking st (k on right side and p on wrong side); yf, yarn forward to make a st; yon, yarn forward or round needle to make a st; nil, meaning nothing is worked here for this size; mc, Light Green.

NOTE

Instructions are given for small size. Where they vary, work figures in round brackets for larger size. Instructions in square brackets are worked as stated after 2nd bracket.

BACK

With No. 10 (3¹/₄ mm) needles and mc, cast on 89 (95) sts.

1st rib row: P1, [k1, p1] to end.

2nd rib row: K1, [p1, k1] to end.

Repeat these 2 rows, 3 times more.

Change to No. 8 (4 mm) needles.

Beginning with a k row, ss 2 (4) rows.

Reading charts (below) from right to left on right side (k) rows and from left to right on wrong side (p) rows, using

separate small balls of contrast colours for each coloured area, twisting yarns together on wrong side at joins and stranding main colour when not in use loosely across wrong side, work in ss, placing charts thus:

1st row: K50 (54) mc, k 1st row of chart A (below), k34 (36) mc.

Work another 7 rows as set.

9th row: K32 (34) mc, k 1st row of chart B (right), k36 (38) mc, k 1st row of chart C (right), k10 (12) mc.

Work another 15 rows, working sts in mc when charts have been completed.

25th row: K15 (17) mc, k 1st row of chart A, k69 (73) mc.

Work another 7 rows as set.

33rd row: K36 (39) mc, k 1st row of chart C, k45 (48) mc.

Work another 13 rows as set.

47th row: K18 (20) mc, k 1st row of chart B, k45 (47) mc, k 1st row of chart B, k20 (22) mc.

Work another 5 rows as set.

With mc, ss 6 rows.

59th row: K37 (39) mc, k 1st row of chart A, k47 (51) mc.

Work another 7 rows as set.

With mc, work nil (2) rows.

67th (69th) row: K70 (75) mc, k 1st row of chart A, k14 (15) mc.

Work another 7 rows as set.

75th (77th) row: K17 (19) mc, k 1st row of chart C, k64 (68) mc.

Work another 13 rows as set.

With mc, work nil (2) rows.

89th (93rd) row: K52 (56) mc, k 1st row of chart C, k29 (31) mc.

Work another 13 rows as set.

With mc, work nil (2) rows.

103rd (109th) row: K10 (11) mc, k 1st row of chart A, k64 (68) mc, k 1st row of chart B, k7 (8) mc.

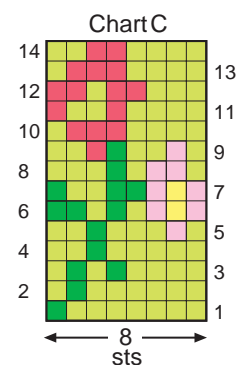
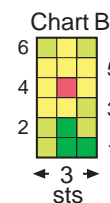
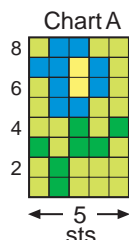
Work another 7 rows, working sts in mc when charts have been completed.

Continue in mc only, ss 2 rows.

Shape shoulders

Cast off 10 (11) sts at beginning of next 4 rows and 11 sts on following 2 rows — 27 (29) sts.

Leave sts on a st holder.



LEFT FRONT

With No. 10 (3¼ mm) needles and mc, cast on 41 (45) sts. Work 8 rows in rib as on back, increasing 1 st at centre of last row on 1st size only — 42 (45) sts.

Change to No. 8 (4 mm) needles. ★★

Beginning with a k row, ss 10 (12) rows.

Work in ss, placing charts thus:

1st row: K25 (27) mc, k 1st row of chart A, k12 (13) mc.

Work another 7 rows as set.

With mc, ss 12 (14) rows.

21st (23rd) row: K11 (12) mc, k 1st row of chart C, k23 (25) mc.

Work another 13 rows as set.

With mc, ss 12 rows.

47th (49th) row: K32 (34) mc, k 1st row of chart B, k7 (8) mc.

Work another 5 rows as set.

With mc, ss 8 rows.

61st (63rd) row: K5 (7) mc, k 1st row of chart A, k32 (33) mc.

Work another 7 rows as set.

With mc, ss 2 rows.

71st (73rd) row: K27 (28) mc, k 1st row of chart C, k7 (9) mc.

Work another 13 rows as set.

With mc, ss 4 (8) rows.

89th (95th) row: K10 (11) mc, k 1st row of chart B, k29 (31) mc.

Work another 5 rows as set.

Continue in mc only, ss 1 row.

★★★ **Shape neck:** Cast off 4 (5) sts at beginning of next row. Dec 1 st at neck edge on next 7 rows — 31 (33) sts.

Work 1 row.

Shape shoulder: Cast off 10 (11) sts at beginning of next row and following alternate row — 11 sts.

Ss 1 row. Cast off. ★★★

RIGHT FRONT

Work as left front to ★★.

Beginning with a k row, ss 16 (18) rows.

Work in ss, placing charts thus:

1st row: K27 (28) mc, k 1st row of chart C, k7 (9) mc.

Work another 13 rows as set.

15th row: K7 (8) mc, k 1st row of chart B, k32 (34) mc.

Work another 5 rows as set.

With mc, ss 8 (10) rows.

29th (31st) row: K14 (15) mc, k 1st row of chart A, k23 (25) mc.

Work another 7 rows as set.

With mc, ss 14 rows.

51st (53rd) row: K20 (22) mc, k 1st row of chart C, k14 (15) mc.

Work another 13 rows as set.

With mc, ss 6 (8) rows.

71st (75th) row: K7 (8) mc, k 1st row of chart B, k32 (34) mc.

Work another 5 rows as set.

With mc, ss 8 (10) rows.

85th (91st) row: K28 (29) mc, k 1st row of chart A, k9 (11) mc.

Work another 5 rows as set.

Continue in mc only when chart has been completed, work as left front from ★★★ to ★★★.

SLEEVES (both alike)

With No. 10 (3¼ mm) needles and mc, cast on 39 (41) sts. Rib 15 rows as back.

Inc row: Rib 3 (4), [inc, rib 2] 11 times, inc, rib 2 (3) — 51 (53) sts.

Change to No. 8 (4 mm) needles.

Beginning with a k row, ss 6 rows. Inc 1 st at each end of next row and nil (1) following 6th row. Ss 3 (1) row(s).

Work in ss, increasing 1 st at each end of 3rd (5th) row and 9 (10) following 6th

rows, at same time, place charts thus:

1st row: K16 (18) mc, k 1st row of chart B, k15 mc, k 1st row of chart C, k11 (13) mc.

Work another 21 (23) rows as set, working sts in mc when charts have been completed.

23rd (25th) row: K12 (13) mc, k 1st row of chart A, k44 (47) mc.

Work another 7 rows as set.

31st (33rd) row: K48 (51) mc, k 1st row of chart A, k10 (11) mc.

Work another 7 rows as set.

With mc, ss 2 (8) rows.

41st (49th) row: K16 (18) mc, k 1st row of chart C, k43 (47) mc.

Work another 7 rows as set.

49th (57th) row: K17 (19) mc, k 9th row of chart C, k19 (20) mc, k 1st row of chart B, k22 (25) mc.

Work another 5 rows as set.

With mc, ss 6 rows — 73 (79) sts.

Cast off.

BUTTON BAND

With right side facing, using No. 10 (3¼ mm) needles and mc, pick up and k81 (87) sts evenly along left front edge.

1st rib row: K1, [p1, k1] to end.

2nd rib row: K2, [k1, p1] to last 3 sts, p1, k2.

Rib another 3 rows.

Cast off in rib.

BUTTONHOLE BAND

Work as button band, making buttonholes on 2nd row of rib thus:

Rib 4, [yon, work 2tog, rib 10 (11)] 6 times, yon, work 2tog, rib 3.

COLLAR

Join shoulder seams. With right side facing and using No. 10 (3¼ mm) needles, rejoin mc to centre of row-ends of buttonhole band and pick up and k22 (23) sts up right front neck shaping, k across sts at back neck, pick up and k22 (23) sts down left front neck shaping to centre of row-ends of button band — 71 (75) sts.

Rib 9 rows as on button band.

Change to No. 8 (4 mm) needles.

Rib another 11 (15) rows.

Cast off loosely in rib.


TO MAKE UP

Press as given on ball band. Place markers 18 (20) cm down from shoulders at side edges of back and fronts. Sew cast-off edge of sleeves to row-ends above markers on back and fronts. Join side and sleeve seams.

Sew on buttons

**Woman's
Weekly**

This pattern first appeared in Woman's Weekly

R O  W A N

Published by Rowan, Green Lane Mill, Holmfirth, West Yorkshire, England HD9 2DX Tel: +44 (0)1484 681881

Internet: www.knitrowan.com Email: mail@knitrowan.com

Commercial reproduction of any part of this material, including illustrations, is strictly forbidden unless prior consent of the publisher has been given in writing. Yarn quantities are approximate as they are based on average requirements.

Copyright Rowan 2004