



Embrace

by Sarah Hatton



YARN

	S	M	L	XL	
To fit bust					
	81-86	91-97	102-107	112-117	cm
	32-34	36-38	40-42	44-46	in

Rowan Kid Classic

A Peat 832	6	7	8	9	x 50gm
B Feather 828	1	1	1	1	x 50gm
C Straw 851	1	1	1	1	x 50gm

NEEDLES

1 pair 4mm (no 8) (US 6) needles
1 pair 4½mm (no 7) (US 7) needles

TENSION

22 sts and 28 rows to 10 cm measured over st st using 4½mm (US 7) needles.

BACK

Using 4½mm (US 7) needles and yarn A cast on 101 [113: 125: 139] sts.

Row 1 (RS): K2 [0: 0: 1], P2 [0: 1: 2], *K3, P2, rep from * to last 2 [3: 4: 1] sts, K2 [3: 3: 1], P0 [0: 1: 0].

Row 2: P2 [0: 0: 1], K2 [0: 1: 2], *P3, K2, rep from * to last 2 [3: 4: 1] sts, P2 [3: 3: 1], K0 [0: 1: 0].

These 2 rows form rib.

Cont in rib for a further 26 rows, ending with RS facing for next row.

Beg with a K row, work in st st for 2 rows, ending with RS facing for next row.

Beg and ending rows as indicated and using the **fairisle** technique as described on the information page, now work 12 rows in patt from chart for border, which is worked entirely in st st beg with a K row, ending with RS facing for next row.

Beg with a K row, now cont in st st using yarn A only as folls:

Cont straight until back meas 47 [48: 49: 50] cm, ending with RS facing for next row.

Shape for cap sleeves

Inc 1 st at each end of next and foll 4th row, then on foll alt row, then on 2 foll rows, ending with **WS** facing for next row.

111 [123: 135: 149] sts.

Place markers at both ends of last row to denote base of armholes.

Work 13 rows, ending with RS facing for next row.

Beg and ending rows as indicated, using the fairisle technique as described on the information page and repeating the 26 row patt repeat throughout, now work in patt from chart for yoke, which is worked entirely in st st beg with a K row, as folls:

Cont straight until armhole meas 22 [23: 24: 25] cm from markers, ending with RS facing for next row.

Shape shoulders and back neck

Next row (RS): Cast off 9 [11: 13: 15] sts, patt until there are 25 [29: 32: 37] sts on right needle and turn, leaving rem sts on a holder.

Work each side of neck separately.

Cast off 3 sts at beg of next row, 9 [11: 13: 15] sts at beg of foll row, then 3 sts at beg of next row.

Cast off rem 10 [12: 13: 16] sts.

With RS facing, rejoin yarns to rem sts, cast off centre 43 [43: 45: 45] sts, patt to end.

Complete to match first side, reversing shapings.

FRONT

Work as given for back until 20 [20: 22: 22] rows less have been worked than on back to beg of shoulder shaping, ending with RS facing for next row.

Shape neck

Next row (RS): Patt 38 [44: 50: 57] sts and turn, leaving rem sts on a holder.

Work each side of neck separately.

Keeping patt correct, dec 1 st at neck edge of next 6 rows, then on foll 3 [3: 4: 4] alt rows, then on foll 4th row. 28 [34: 39: 46] sts.

Work 3 rows, ending with RS facing for next row.

Shape shoulder

Cast off 9 [11: 13: 15] sts at beg of next and foll alt row.

Work 1 row.

Cast off rem 10 [12: 13: 16] sts.

With RS facing, rejoin yarns to rem sts, cast off centre 35 sts, patt to end.

Complete to match first side, reversing shapings.

MAKING UP

Press as described on the information page.

Join right shoulder seam using back stitch, or mattress stitch if preferred.

Neckband

With RS facing, using 4mm (US 6) needles and yarn A, pick up and knit 21 [21: 22: 22] sts down left side of neck, 35 sts from front, 21 [21: 22: 22] sts up right side of neck, then 55 [55: 58: 58] sts from back. 132 [132: 137: 137] sts.

Row 1 (WS): K2, *P3, K2, rep from * to end.

Row 2: P2, *K3, P2, rep from * to end.

These 2 rows form rib.

Work in rib for a further 7 rows, ending with RS facing for next row.

Cast off in rib.

Join left shoulder and neckband seam.

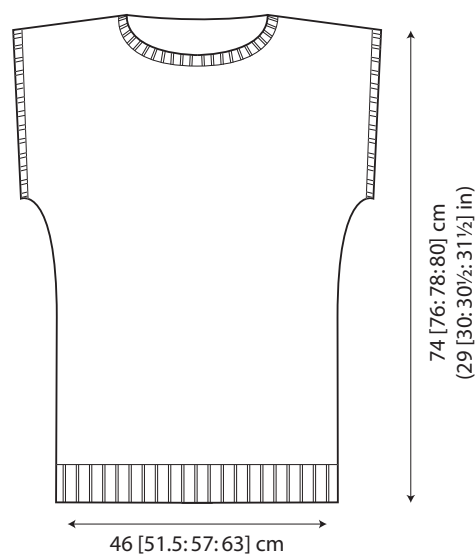
Armhole borders (both alike)

With RS facing, using 4mm (US 6) needles and yarn A, pick up and knit 97 [102: 107: 112] sts evenly along armhole edge between markers.

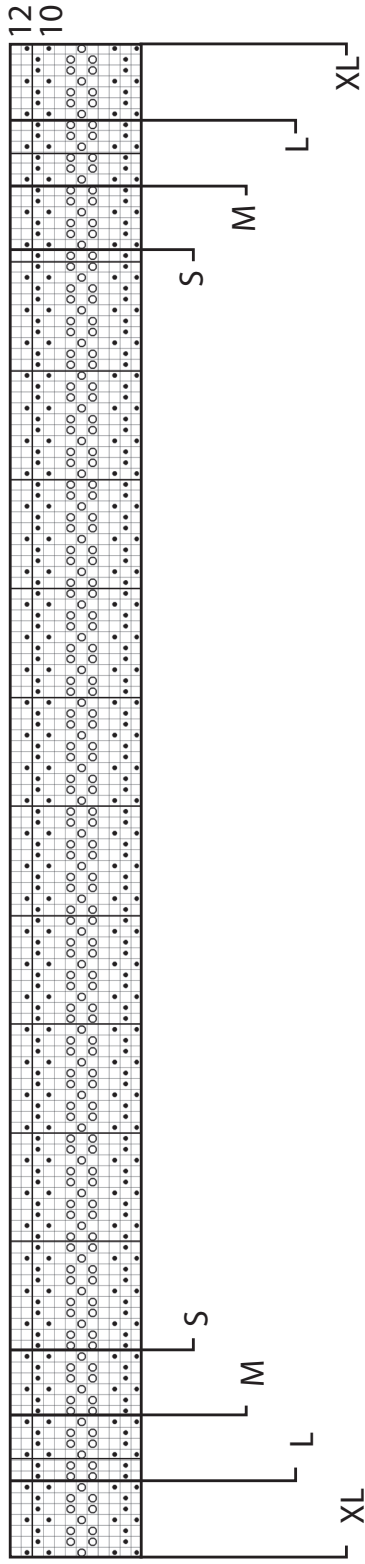
Work in rib as given for neckband for 9 rows, ending with RS facing for next row.

Cast off in rib.

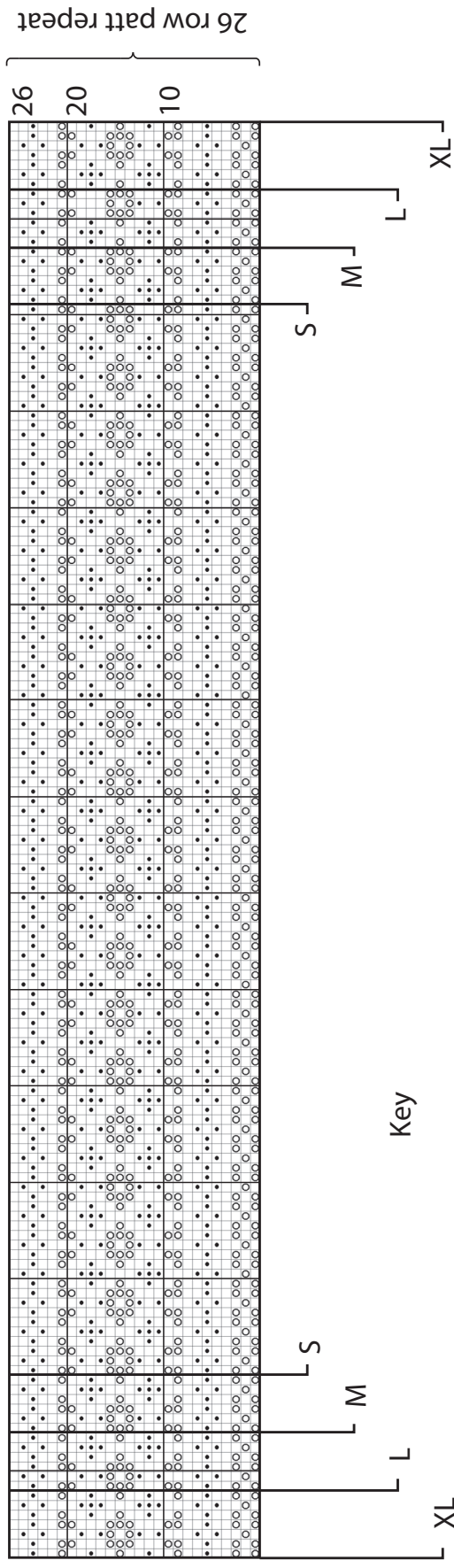
See information page for finishing instructions.



Border Chart



Yoke Chart



Key



K on RS, P on WS in A



K on RS, P on WS in B



K on RS, P on WS in C